



70-900 SERIES

Standard Port 3-Way Diversion Solder End Bronze Ball Valve

Job Name:	Contractor:
Job Location:	P.O. Number:
Engineer:	Representative:
Tag:	Wholesale Distributor:

DESCRIPTION

The Apollo® 70-900 Series is designed to be soft soldered without disassembly and is ideal for flow diversion; its larger ports make tank selection and fluid transfers simpler.

FEATURES

- Adjustable Packing Gland
- Blow-Out Proof Stem Design
- RPTFE Seats and Stuffing Box Ring
- 100% Factory Tested

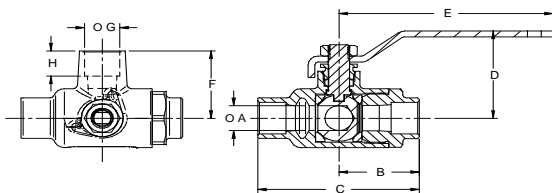
PERFORMANCE RATING

- Maximum Pressure: 400 psi CWP
- Maximum Temperature: 500°F

STANDARD MATERIALS LIST

Lever and Grip	Steel, Zinc Plated w/ Vinyl
Stem Packing	RPTFE
Stem Bearing	RPTFE
Ball	B16 Brass, Chrome Plated
Seat (2)	RPTFE
Retainer	B16 Brass
Gland Nut	B16 Brass
Stem	B16 Brass
Lever Nut	Steel, Zinc Plated
Body	B584 Bronze -C84400

DIMENSIONS



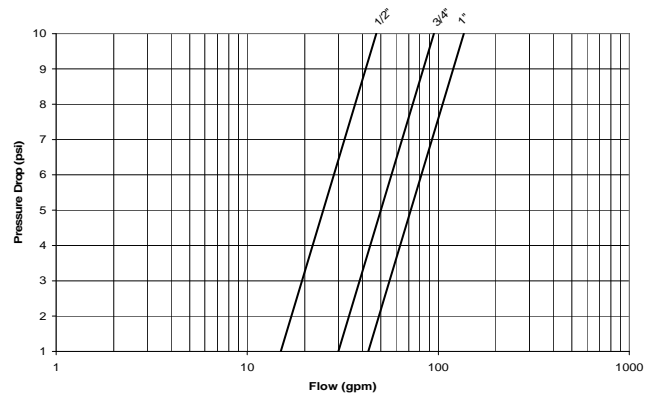
Model Number	Size (in.)	Dimensions								Wt (lbs.)
		A	B	C	D	E	F	G	H	
70-903	1/2"	0.50	1.44	2.87	1.75	3.87	1.34	0.63	0.50	0.76
70-904	3/4"	0.68	1.94	3.87	2.12	4.87	1.69	0.88	0.90	1.65
70-905	1"	0.87	2.19	4.42	2.25	4.87	1.87	1.13	0.90	2.15

APPROVALS

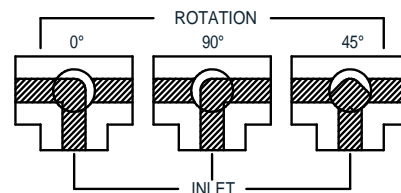
- MSS SP-110; Ball Valves, Threaded, Socket-Welding,
- Federal Specifications: WW-V-35C, Type: II,
- Canadian Registration Number: 0C10908.5C



FLOW CAPACITY



FLOW PATTERN VIEW FROM TOP



OPTIONS & SIZES

- | | |
|--|------------|
| <input type="checkbox"/> 02 -Stem Grounded | 1/2" to 1" |
| <input type="checkbox"/> 03 -1 1/4" CS Stem Extension | 1/2" to 1" |
| <input type="checkbox"/> 04 -2 1/4" CS Stem Extension | 1/2" to 1" |
| <input type="checkbox"/> 05 -Plain Ball | 1/2" to 1" |
| <input type="checkbox"/> 10 -SS Lever & Nut | 1/2" to 1" |
| <input type="checkbox"/> 17 -Rough Chrome Plated-Bronze Valves | 1/2" to 1" |
| <input type="checkbox"/> 21 -UHMWPE Seats (Non-PTFE) | 1/2" to 1" |
| <input type="checkbox"/> 29 -Graphite Packing | 1/2" to 1" |
| <input type="checkbox"/> 27 -SS Latch-Lock Lever & Nut | 1/2" to 1" |
| <input type="checkbox"/> 35 -VTFE Trim | 1/2" to 1" |
| <input type="checkbox"/> 50 -2 1/4" CS Locking Stem Extension | 1/2" to 1" |
| <input type="checkbox"/> 56 -MPTFE Seats & Packing | 1/2" to 1" |
| <input type="checkbox"/> 57 -Oxygen Cleaned | 1/2" to 1" |
| <input type="checkbox"/> 60 -Static Grounded Ball & Stem | 1/2" to 1" |