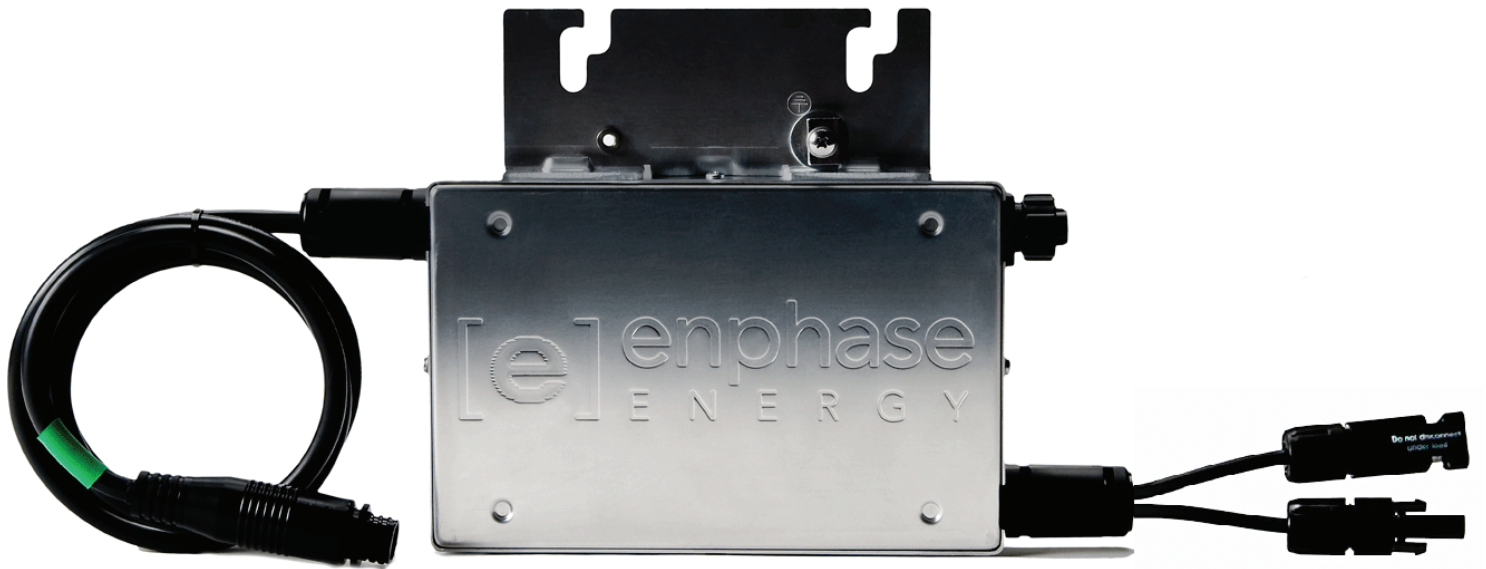




ENPHASE MICROINVERTER

M190



The Enphase Energy Microinverter System improves energy harvest, increases reliability, and dramatically simplifies design, installation and management of solar power systems. The Enphase System includes the microinverter, the Envoy Communications Gateway, and the web-based Enlighten monitoring and analysis website.

- PRODUCTIVE**
 - Maximum energy production
 - Resilient to dust, debris and shading
 - Performance monitoring per module
- RELIABLE**
 - MTBF of 331 years
 - System availability greater than 99.8%
 - No single point of system failure
- SMART**
 - Quick & simple design, installation and management
 - 24/7 monitoring and analysis
- SAFE**
 - Low voltage DC
 - Reduced fire risk



MICROINVERTER TECHNICAL DATA

| 60 and 72 Cell Modules | | |
|--------------------------------|---|---|
| Input Data (DC) | M190-72-208-S12/3 M190-72-208-S12/3-NA (Ontario) | M190-72-240-S12/3 M190-72-240-S12/3-NA (Ontario) |
| Recommended input power (STC) | 230W | 230W |
| Maximum input DC voltage | 56V | 56V |
| Peak power tracking voltage | 22V – 40V | 22V – 40V |
| Min./Max. start voltage | 28V/54V | 28V/54V |
| Max. DC short circuit current | 12A | 12A |
| Max. input current | 10A | 10A |
| Output Data (AC) | | |
| Maximum output power | 190W | 190W |
| Nominal output current | 920mA | 800mA |
| Nominal voltage/range | 208V/183V-229V | 240V/211V-264V |
| Extended voltage/range | 208V/179V-232V | 240V/206V-269V |
| Nominal frequency/range | 60.0/59.3-60.5 | 60.0/59.3-60.5 |
| Extended frequency/range | 60.0/59.2-60.6 | 60.0/59.2-60.6 |
| Power factor | >0.95 | >0.95 |
| Maximum units per branch | 21 | 15 |
| Efficiency | | |
| Peak inverter efficiency | 95.5% | 95.5% |
| CEC weighted efficiency | 95.0% | 95.0% |
| Nominal MPP tracking | 99.6% | 99.6% |
| Mechanical Data | | |
| Operating temperature range | -40°C to +65°C | -40°C to +65°C |
| Night time power consumption | 30mW | 30mW |
| Dimensions (WxHxD) | 8" x 5.25" x 1.25" | |
| Weight | 4.4 lbs | |
| Cooling | Natural Convection – No Fans | |
| Enclosure environmental rating | Outdoor – NEMA 6 | |
| Features | | |
| Communication | Powerline | |
| Warranty | 15 Years | |
| Compliance | UL1741/IEEE1547 FCC Part 15 Class B | |

Enphase Energy, Inc.

201 1st Street, Suite 300, Petaluma, CA 94952
877 797 4743 enphaseenergy.com

142-00005 REV 05